

# Sustainability and animal research – a collaborative effort

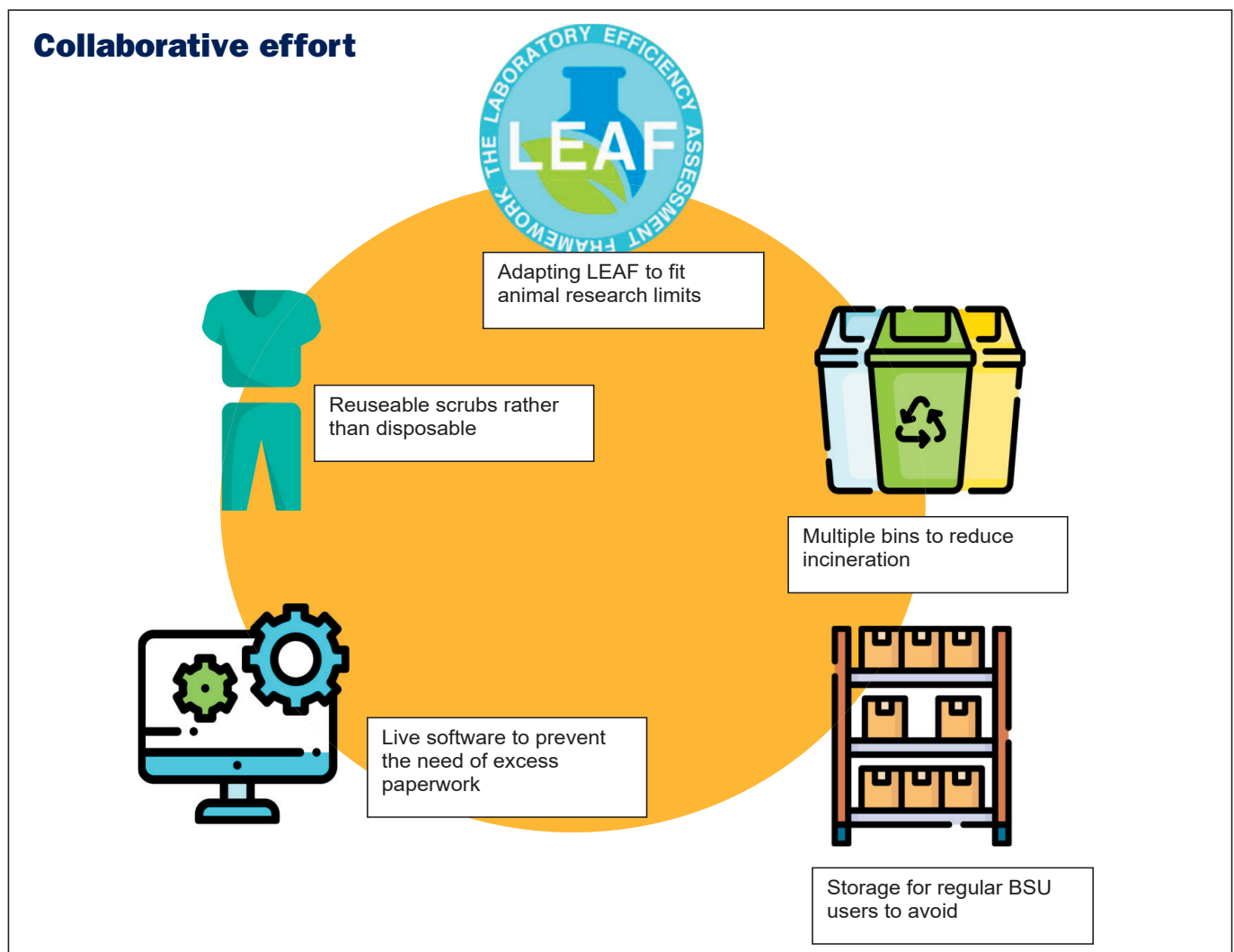
JOSHUA KERR

University College London Biological Services

Correspondence: j.kerr@ucl.ac.uk

## Introduction

- Animal research is a very important part of the scientific process.
- Animal research is a very costly part of the scientific process.
- This is a highly regulated field that cannot be compromised and for good reason.
- Animal facilities can be the most costly part of a university or business.
  - high energy usage for day to day care of laboratory animals
  - large ordering system
  - record keeping
  - ventilation
- Main ways to minimise our impact are:



## **What is LEAF?**

- LEAF – laboratory efficiency assessment framework.
- University College London (UCL) global standard for sustainable science.
- Collaborated with animal facilities to create a more reasonable framework.
- Will not demand equipment turn off.
- Looks into alternative energy saving actions such as timers.

## **Green champion initiative**

- There are dedicated green champions in each animal facility.
- There is a centralised green champion to coordinate meetings and communication.
- Collaborative platform to share ideas and improve each facility.
- United front to talk to external companies and departments.

## **Successes**

- Recognised by UCL and winning gold and silver awards in LEAF.
- Engrained in recruitment and inductions.

## **The future**

- Look into financial and carbon calculators.
- Collaborate with other universities and research facilities.
- Work with other types of species such as aquatics.

## **Acknowledgements**

UCL LEAF

Icons from Flaticon